



INSTALLATION MANUAL

SK-4208 Arnett New Rear Right Shock Lincoln Navigator (U554)



Engineered to Ride, Built to Last[®]

CONGRATULATIONS ON YOUR PURCHASE OF AN ARNOTT® SUSPENSION PRODUCT

WE AT ARNOTT LLC ARE PROUD TO OFFER A HIGH QUALITY PRODUCT WITH ALL THE TECHNICAL SUPPORT YOU NEED. THANK YOU FOR YOUR CONFIDENCE IN US AND OUR PRODUCT.

Proper installation is essential to experience and appreciate the benefits of this system. Please take a moment to review these installation instructions before you begin to install these components on your vehicle. The removal and installation of air suspension products should only be performed by a fully qualified and certified automotive professional.

It is equally important to be aware of all necessary safety measures while installing your new Air Suspension System. This includes proper lifting and immobilizing of the vehicle and isolation of any stored energy to prevent personal injury or property damage.

GENERAL INFORMATION

Reading this manual signifies your agreement to the terms of the general release, waiver of liability, and hold harmless agreement, the full text of which is available at www.Arnottinc.com and www.Arnotteurope.com.



WARNING:

The air suspension system is under pressure (up to 10 bar, or 150 lbf/in). Verify pressure has been relieved and disconnect power to the air suspension system prior to disassembly. Do not allow dirt or grease to enter the system. Always wear standard hand, ear, and eye protection when servicing the air suspension system.

- Not to be stored below 5°F (-15°C) and above 122°F (50°C).
- Avoid damage to air lines and cables.
- Removal and installation is only to be performed by fully qualified personnel.
- Use car manufacturer's diagnostic software.

CAUTION:

Damage to the vehicle and air suspension system can be incurred if work is carried out in a manner other than specified in the instructions or in a different sequence.

To avoid the possibility of short circuits while working with electric components consult your owner's manual on how to disconnect your battery.

Consult your vehicle owner's manual, service manual, or car dealer for the correct jacking points on your vehicle and for additional care, safety and maintenance instructions. Under no circumstances should any work be completed underneath the vehicle if it is not adequately supported, as serious injuries and death can occur.

For vehicles with a "Closed Air Supply System," replacement of components requires proper adherence to procedures set forth within OE servicing literature. Failure to comply with the OE prescribed procedures can result in component damage and/or failure.

REAR SHOCK REMOVAL

1. Raise vehicle and remove the rear right wheel. (Figure 1)



FIGURE 1

2. Disconnect and unroute electrical connection. (Figures 2, 3)



FIGURE 2



FIGURE 3

3. Disconnect ride height sensor bracket from lower control arm. (Figures 4, 5)



FIGURE 4



FIGURE 5

4. Remove the bottom shock bolt. (Figures 6, 7)



FIGURE 6



FIGURE 7

5. Remove lower control arm bolt. (Figures 8, 9)

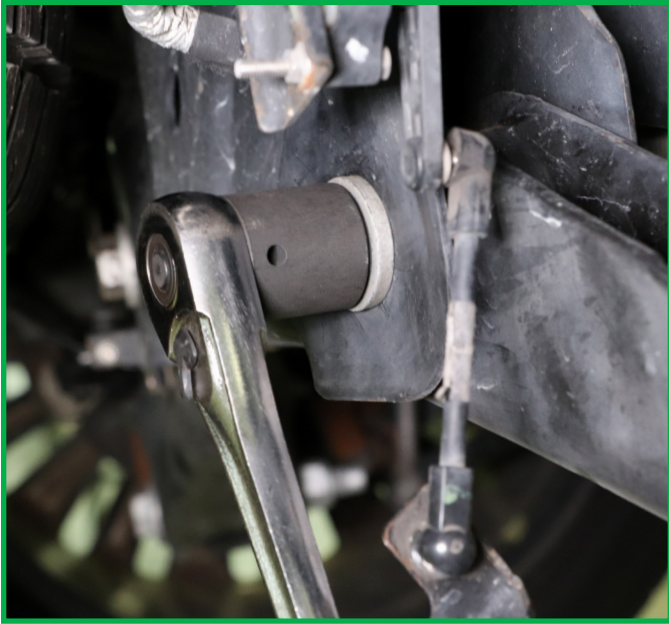


FIGURE 8



FIGURE 9

6. Remove the three (3) shock top mount nuts. (Figures 10, 11)

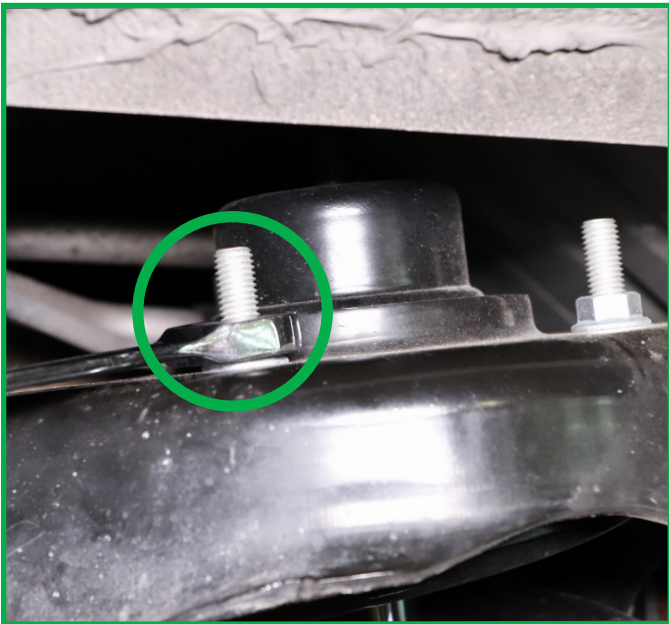


FIGURE 10



FIGURE 11

7. Pull down the lower control arm and remove shock from the vehicle. (Figure 12)



FIGURE 12

8. Removal complete.

REAR SHOCK INSTALLATION



WARNING:

Tighten all nuts and bolts to manufacturer's specifications during the installation process.

1. Insert new Arnott shock into vehicle. (Figure 13)



FIGURE 13

2. Install top mount nuts loosely to hold shock in place. (Figure 14)



FIGURE 14

3. Reconnect the lower control arm and install the lower control arm bolt. Tighten to manufacturer's specifications. (Figures 15, 16)



FIGURE 15

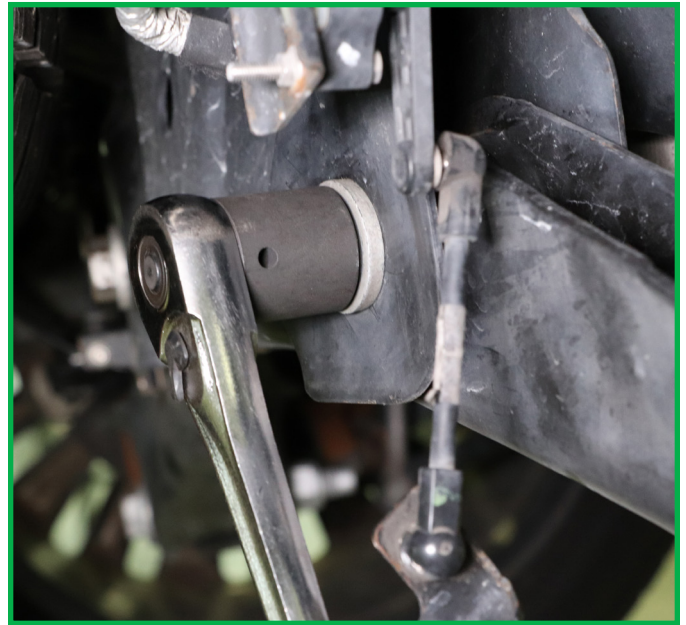


FIGURE 16

4. Position and reinstall the bottom shock mount bolt. Tighten to manufacturer's specifications. (Figures 17, 18)



FIGURE 17



FIGURE 18

5. Reconnect the ride height sensor bracket to the lower control arm. Tighten to manufacturer's specifications. (Figures 19, 20)



FIGURE 19



FIGURE 20

6. Connect electrical connection to the new shock. (Figures 21, 22)



FIGURE 21



FIGURE 22

7. Finish tightening top mount nuts to manufacturer's specifications. (Figure 23)

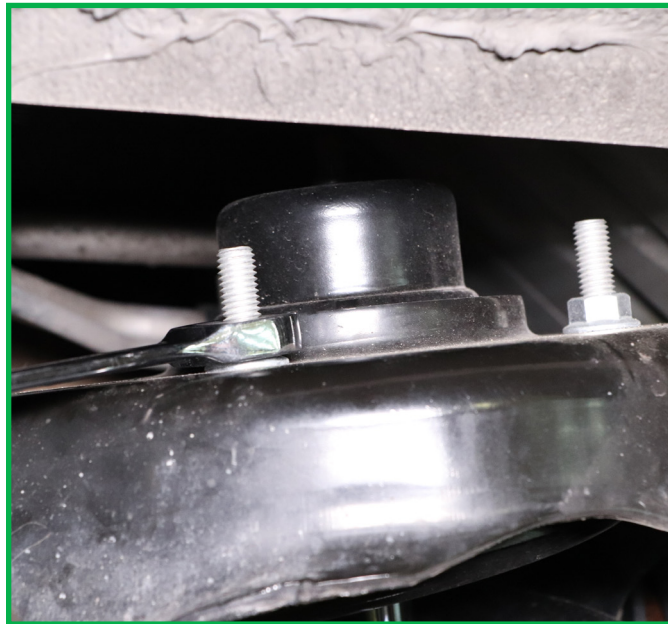


FIGURE 23

8. Reinstall rear right wheel.

9. Lower vehicle.

10. Installation complete.

Arnott®

Suspension Products

Arnott US Business Office:

www.Arnottinc.com

100 Sea Ray Drive
Merritt Island, FL 32953

Call: 800.251.8993

321.868.3016

Fax: 321.868.3703

Email: techassistance@Arnottinc.com

Arnott Europe Business Office:

www.Arnotteurope.com

Industrieweg 19
5145 PD, Waalwijk (NL)

NL Phone: +31 73 7850 580

DE Phone: +31 85 2087 438

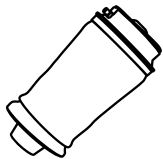
UK Phone: +44 203 3186 124

BE Phone: +32 258 846 90

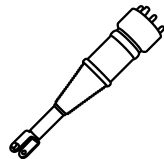
ES Phone: +34 91 901 10 56

FR Phone: +32 78 48 46 93

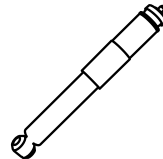
Email: info@Arnotteurope.com



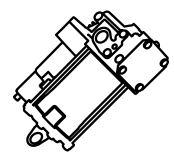
Air Springs



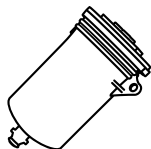
Struts



Shocks



Compressors



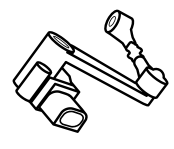
Dryers



Coil Spring
Conversion Kits



Valve Blocks



Ride Height
Sensors